

Traditional Mirrors

These sensational traditional mirrors are of the highest quality.

**Traditional mirrors come in a wide range of styles,
from Pre-Modern all the way back in time to Antique,
English-Victorian to French-Provincial, Ornate to Decorative.**

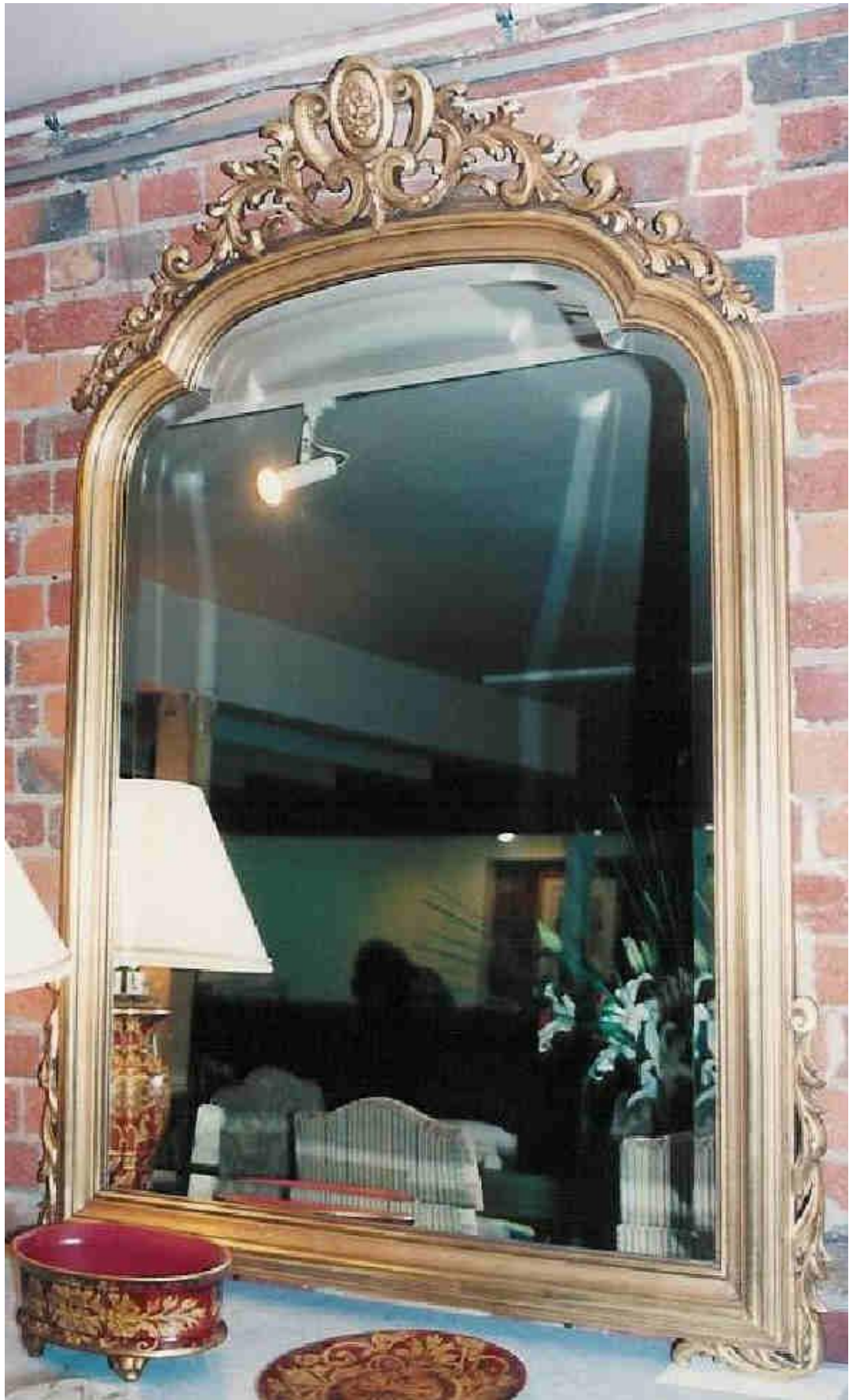
As you see here, these gorgeous traditional mirrors are of the highest quality.
All frames are available in gold-leaf, silver-leaf and various timber finishes.

Sizes can be tailored to fit your requirements in some styles.
Reward yourself, or someone you care about, with a gift such as these.

Please note the **Item Number and Description** of any mirror of interest.
Then [Contact Us](#) to get more details via email or phone 0417 329 011



JM01 - French Pediment Beaded Mirror - Outside Width 155 cm x Height 220 cm



JM02 - French Pediment Beaded Mirror - Outside Width 136 cm x Height 106 cm



JM03 - Triple-arch French mirror with Cherub ornament - Outside Width 120 cm x Height 190 cm



JM05 - Triple-arch French mirror with large Shell top - Outside Width 120 cm x Height 200 cm



JM06 - Quadruple-arch French mirror with Georgian top - Width 120 cm x Height 190 cm



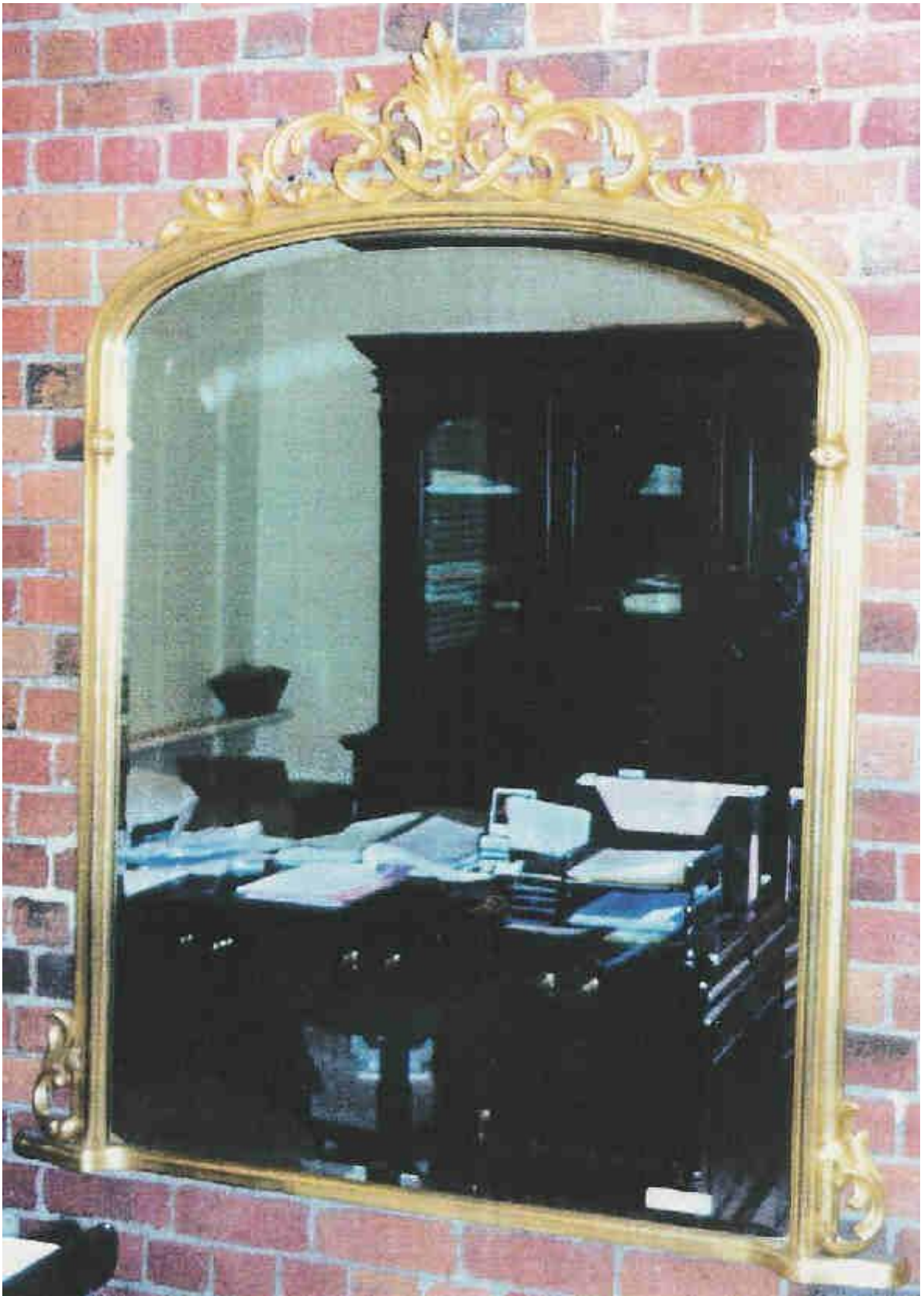
JM07 - Victorian Oval Mirror with Cherub ornament - Width 135 cm x Height 108 cm



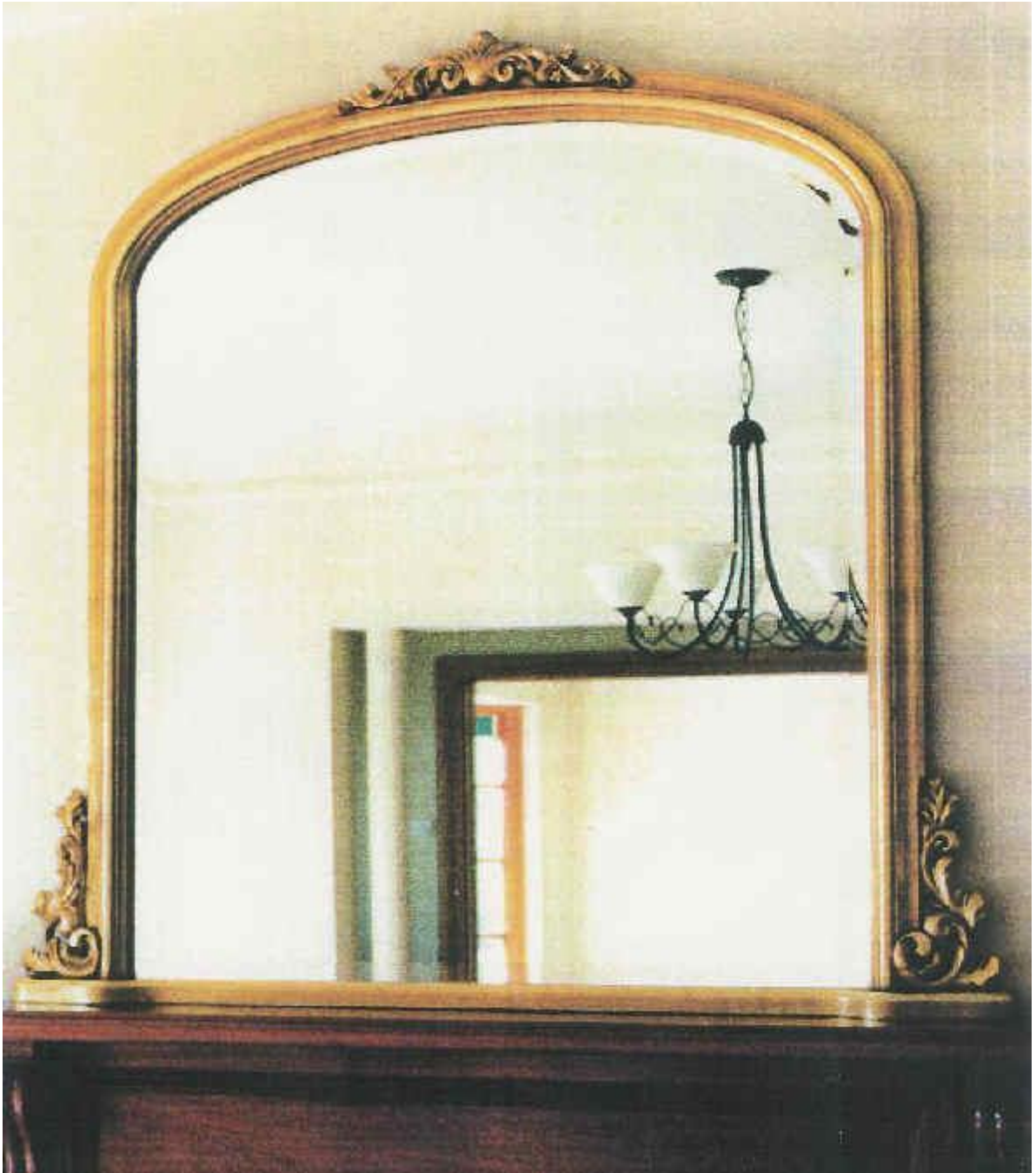
JM08 - Victorian Oval Mirror with Shell top ornament - Width 135 cm x Height 100 cm



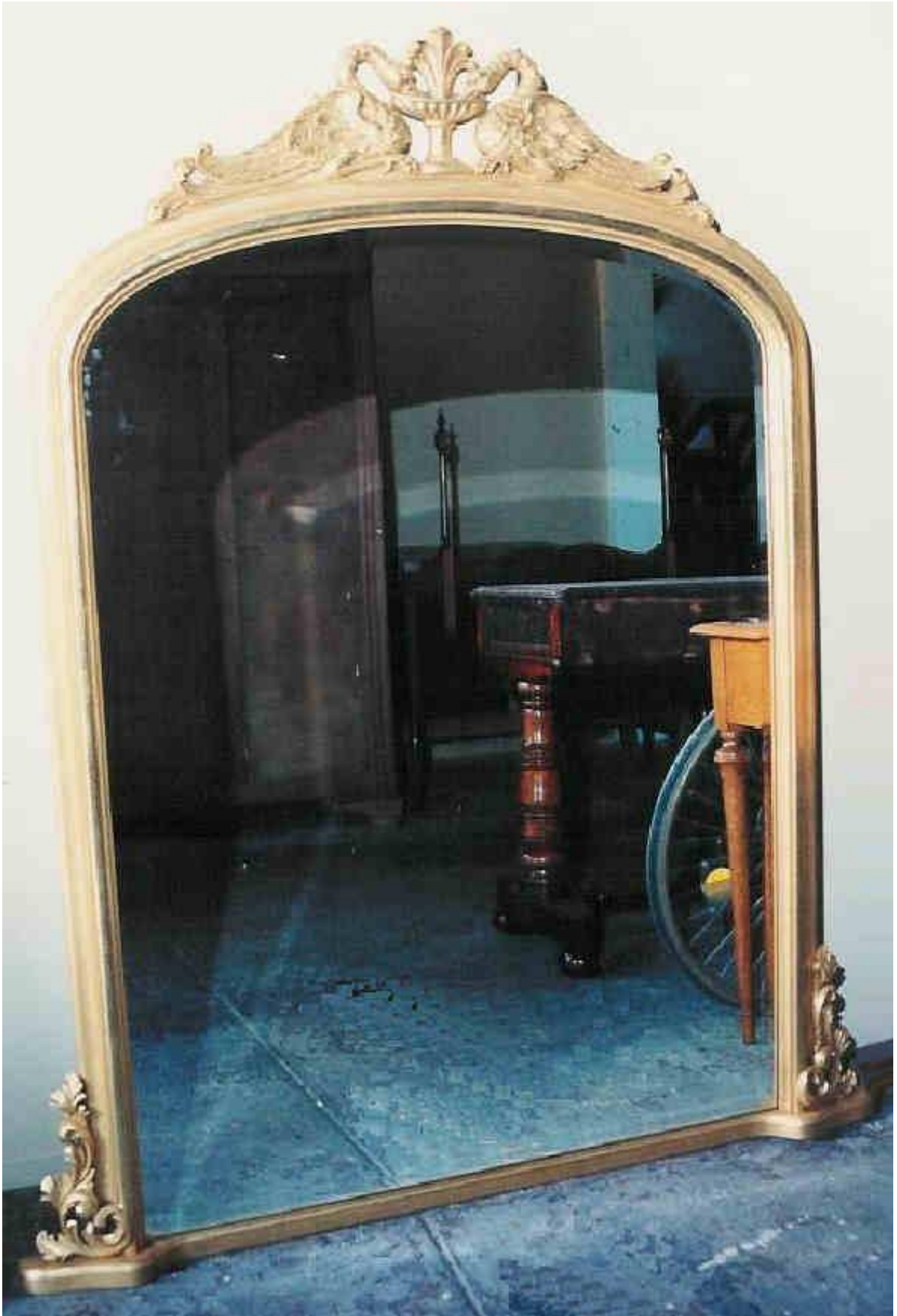
JM09 - Oval Mirror - Width 120 cm x Height 88 cm



JM10 - English Arch-top Mirror Circa 1860 design - Width 140 cm x Height 170 cm



JM11 - Victorian Arch-top Mirror - Width 120 cm x Height 138 cm



JM12 - Victorian Arch-top Mirror with Swan ornament - Width 120 cm x Height 158 cm



JM13 - Victorian Arch-top Mirror with Ribbon top ornament - Width 95 cm x Height 200 cm



JM14 - Flat Arch French Mirror with Beads & Shell top ornament - Width 110 cm x Height 175 cm



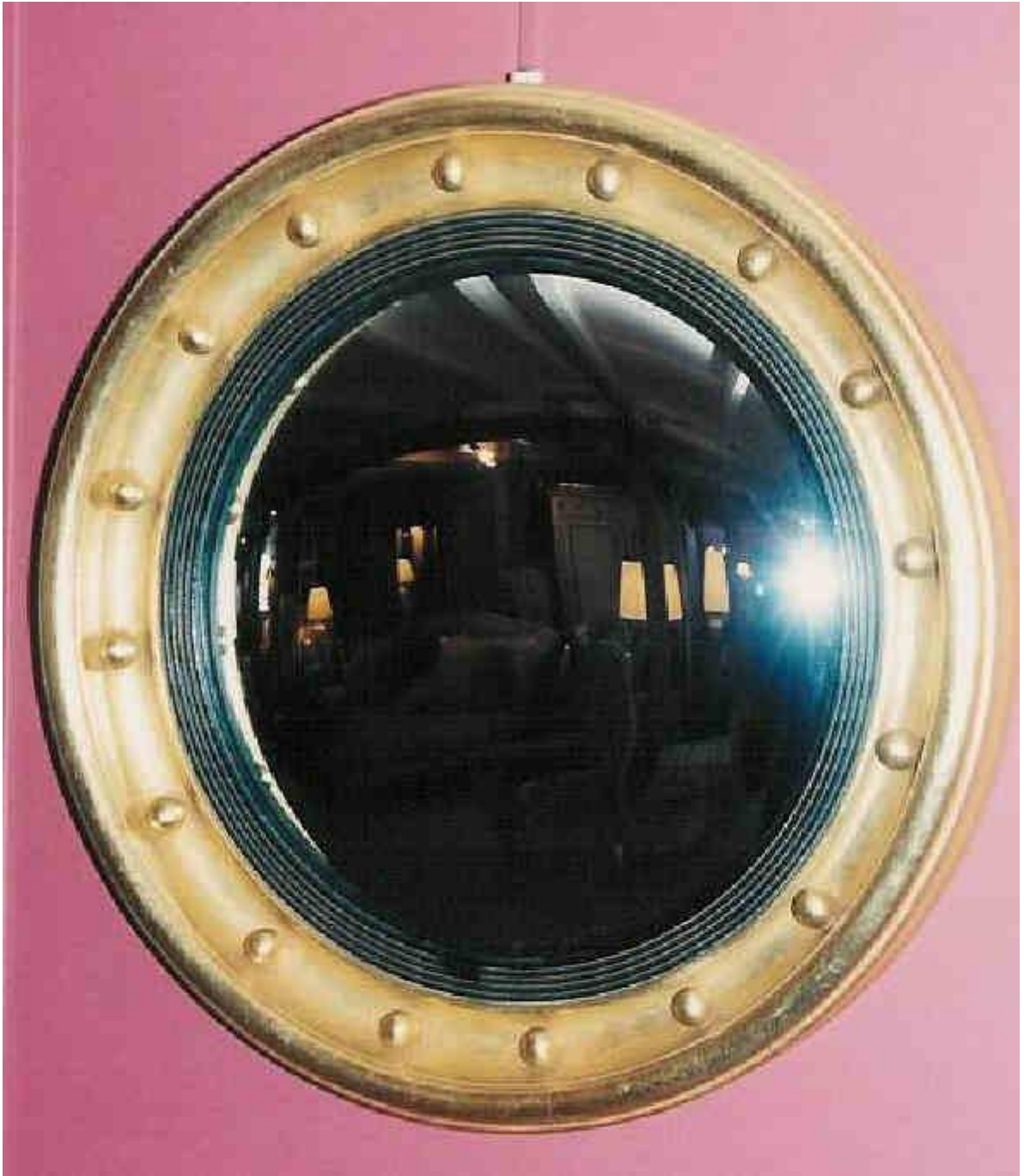
JM16 - Georgian Parcel Gilt Mirror with Walnut Veneer Circa 1750 design - Width 75 cm x Height 140 cm



JM17 - Plain Regency Gilded & Ebonized Convex Eagle Mirror - Width 58 cm x Height 99 cm



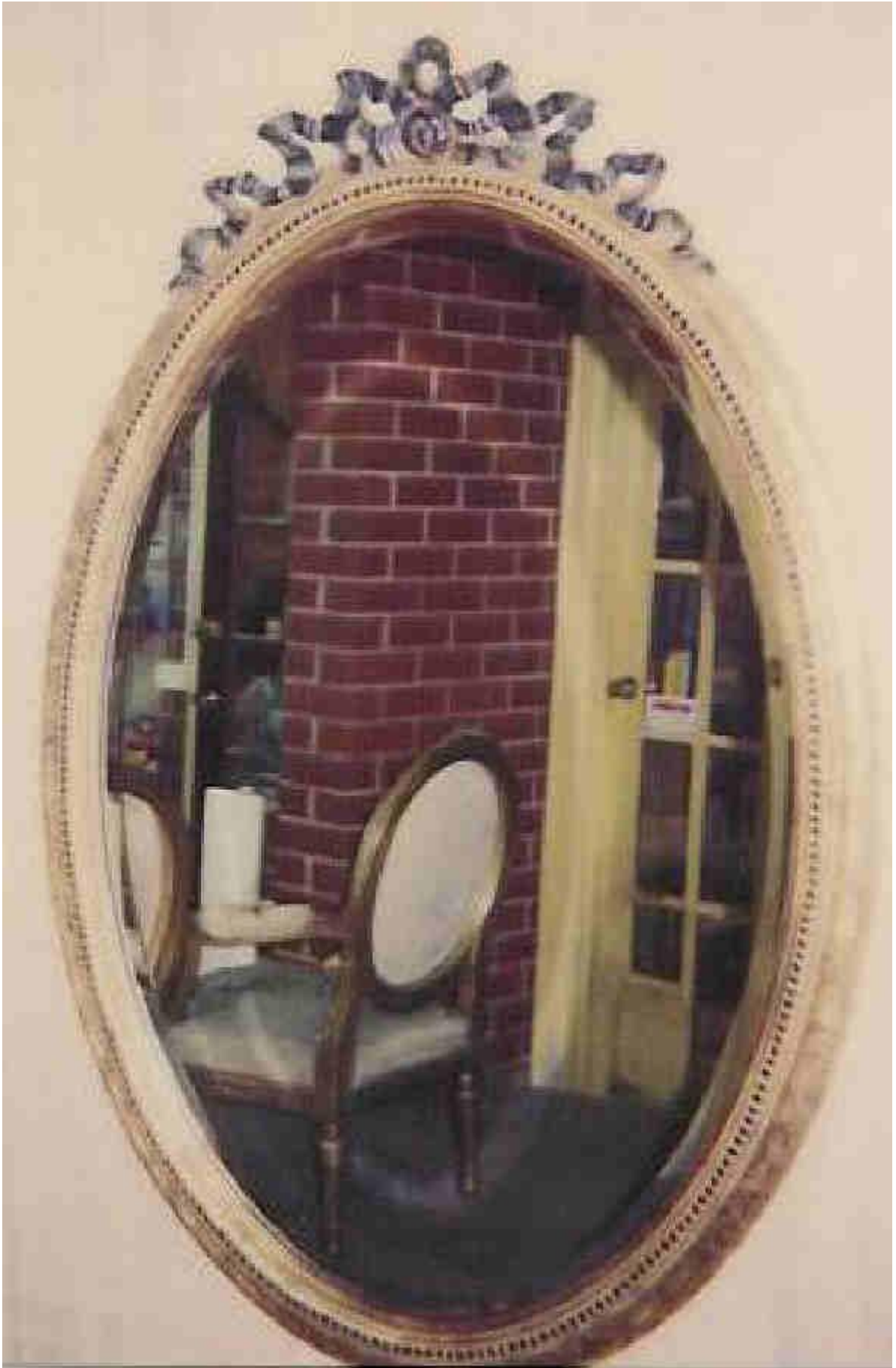
JM18 - Regency Gilded & Ebonized Convex Eagle Mirror with Balls - Width 58 cm x Height 99 cm



JM19 - Regency Gilded & Ebonized Convex Mirror with Balls - Diameter 58 cm



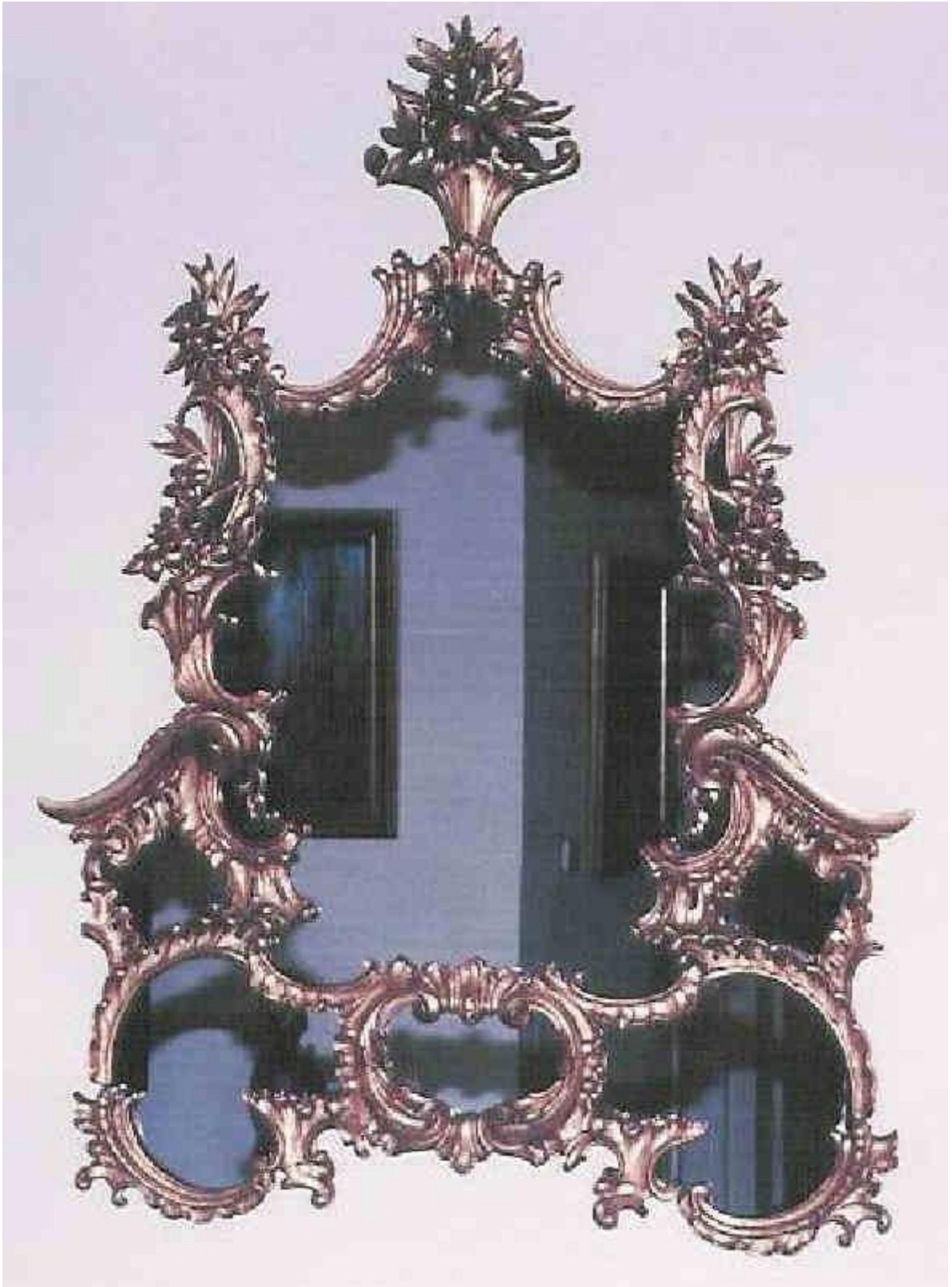
JM20 - Regency Gilded & Ebonized Convex Mirror - Diameter 56 cm



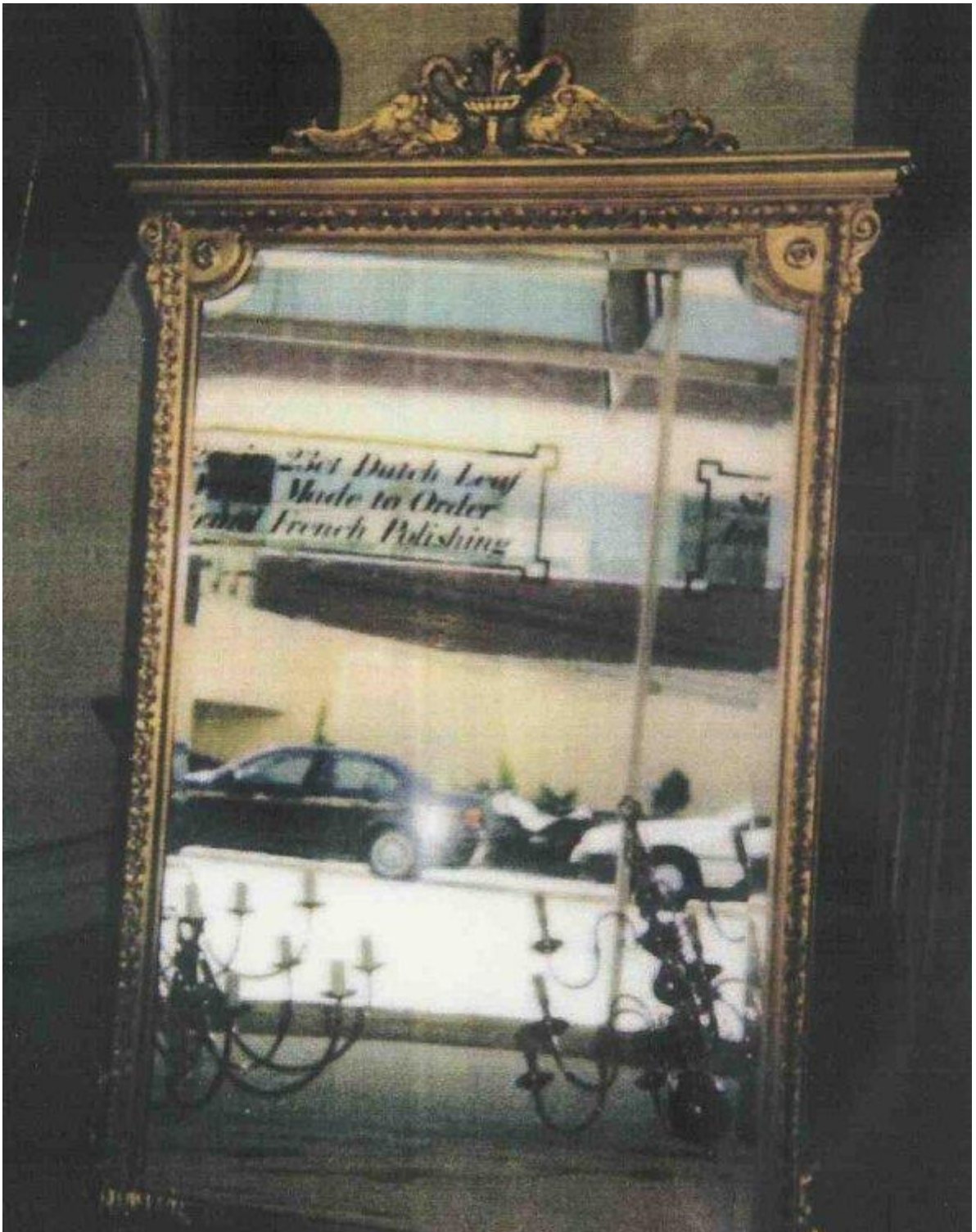
JM21 - Oval Mirror with Beads & Ribbon top - Width 85 cm x Height 130 cm



JM22 - French Provincial Gilt Mirror - Width 140 cm x Height 200 cm



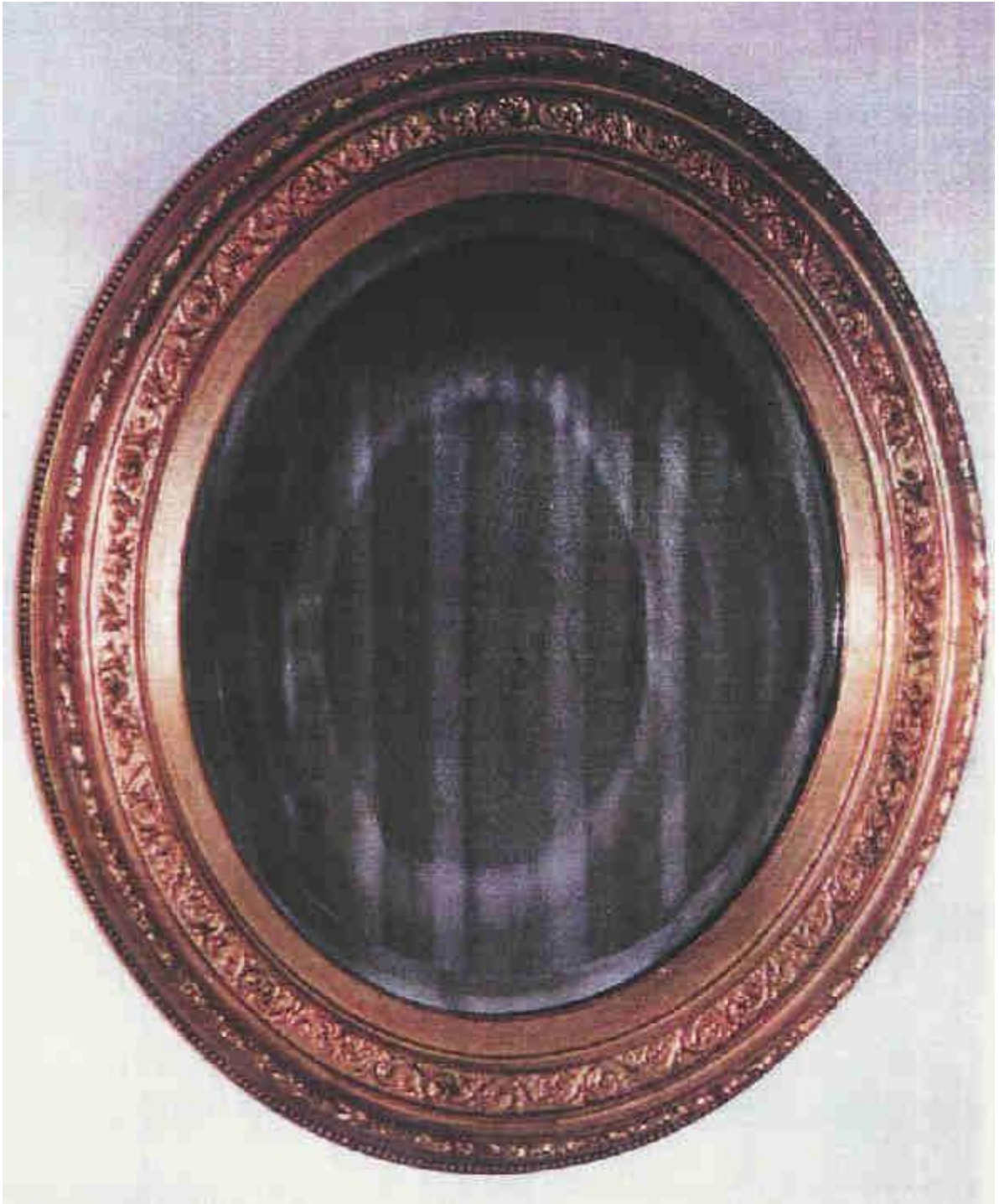
JM23 - French Provincial Mirror - Width 100 cm x Height 140 cm



JM24 - Georgian Mirror with Swan top - Width 120 cm x Height 175 cm



JM25 - Cross-banded Empire Swan Mirror - Width 95 cm x Height 160 cm



JM26 - French Oval Mirror - Width 54 cm x Height 60 cm



JM27 - Regency Style Round Bevelled Mirror, with a 10 cm wide timber frame finished in Gold Leaf, with Leafed timber balls as a feature - Outside Diameter 97 cm



WCG0102 - CONSTANCE GOLD - Mirror size: 61 cm x 91.5 cm - Overall size: 69 x 99 cm



WCS0102 - CONSTANCE SILVER - Mirror size: 61 cm x 91.5 cm - Overall size: 69 x 99 cm



WDOR01 - DOMED OVERMANTLE RUSTICA - Mirror size: 61 cm x 61 cm - Overall size: 116 x 119 cm incl Ornament at top



WF01 - FLORENTINE BLACK/GOLD - Mirror size: 61 cm x 91.5 cm - Overall size:
77 x 107 cm



WHG0102 - HELENA GOLD - Mirror size: 91.5 cm x 61 cm - Overall size: 103 x 73 cm



WHS0102 - HELENA SILVER - Mirror size: 91.5 cm x 61 cm - Overall size: 103 x 73 cm



WHW01 - HELENA WHITE - Mirror size: 91.5 cm x 61 cm - Overall size: 103 x 73 cm



WJC0102 - JULIETTE CHEVAL CREAM - Mirror size: 148 cm x 35 cm - Overall size: 160 x 47 cm

Also available in Mirror size: 138 cm x 62 cm - Overall size: 150 x 74 cm

An Overall size of 103 x 73 cm is also available in Gloss or Matt White, Gloss Black, Gold, Silver, Gloss Amber, Gloss Blue, Gloss Lemon, Gloss Maroon, Gloss Soft Blue, Soft Blush (light pink), Soft Green, Soft Grey, and Teal finishes.

The Overall size of 150 x 74 cm is also available in Gloss or Matt White, Gloss Black, and Silver finishes.

A Gold finish is also available in Overall size of 112 x 87 cm.



WJG01 - JULIETTE GOLD - Mirror size: 91.5 cm x 61 cm - Overall size: 103 x 73 cm
Also available in Mirror size: 100 cm x 75 cm - Overall size: 112 x 87 cm
The Overall size of 103 x 73 cm is also available in Gloss Black, Antique Silver, Gloss Amber, Gloss Blue, Gloss Lemon, Gloss Maroon, Gloss Soft Blue, Soft Blush (light pink), Soft Green, Soft Grey, and Teal finishes.



WJW0102 - JULIETTE WHITE (gloss or matt) - Mirror size: 91.5 cm x 61 cm -
Overall size: 150 x 74 cm

Also available in in Mirror size: 91 cm x 61 cm - Overall size: 103 x 73 cm



WNS010203 - NEO CLASSICAL SILVER - Mirror size: 61 cm x 122 cm - Overall size: 98 x 159 cm

Also available in in Mirror sizes: 76 cm x 101.5 cm - Overall size: 113 x 138 cm
: 91.5 cm x 122 cm - Overall size: 140 x 230 cm



WSP01 - SARA PROVINCIAL - Mirror size: Width 30.5 cm x Height 122 cm -
Overall size: 38 x 125 cm



WSS01 - SARAH SILVER - Mirror size: Width 30.5 cm x Height 122 cm - Overall size: 38 x 125 cm



WSGM01 - SHERWOOD GOLD/MAHOGANY - Mirror size: 91.5 cm x 122 cm -
Overall size: 131 x 162 cm



WSSB01 - SHERWOOD SILVER/BLACK - Mirror size: 122 cm x 91.5 cm - Overall size: 162 x 131 cm



WWS0102 - WOVEN SILVER - Mirror size: 101.5 cm x 76 cm - Overall size: 130 x 105 cm

Also available in Mirror sizes: 122 cm x 91.5 cm - Overall size: 150 x 120 cm

: 122 cm x 91.5 cm - Overall size: 210 x 150 cm

: 122 cm x 91.5 cm - Overall size: 210 x 120 cm